



RUNWAY REPORT

MEN'S EDIT

LAKMÉ FASHION
WEEK X FDCI





OCT
'25



ICH NEXT[®]

OCTOBER 2025,
DELHI



About the Runway Trend Report

Welcome to our comprehensive Runway Trend Report, meticulously crafted for industry professionals and fashion enthusiasts eager to delve into the macro trends shaping the fashion landscape. Brought to you by ICH, this report serves as an analytical and objective exploration of the prevailing themes and innovations that have emerged from the latest fashion week.

Our intent is to provide a detailed examination of the trends that are not only influencing current fashion narratives but are also poised to impact future collections and consumer preferences. By dissecting these trends, we aim to equip designers, retailers, and fashion aficionados with the insights necessary to navigate the ever-evolving fashion ecosystem. In this report, you will find a thorough analysis of key trends on colour, pattern and thematic styling, supported by visuals and expert commentary, to offer a holistic view of the fashion industry's direction.

Our objective approach ensures that the information presented is unbiased and grounded in factual observations, allowing you to make informed decisions and strategic plans. We invite you to explore the pages ahead and immerse yourself in the dynamic world of fashion trends, armed with the knowledge to anticipate and adapt to the industry's ever-changing landscape.

LAKMÉ`
FASHION
WEEK
X FDCI

Summary:

Men's wear at Lakmé Fashion Week x FDCI, October 2025, reflected a shift in masculine identity – capturing evolving emotions, aesthetics, and priorities. The collections embraced influences from women's wear and functional design, blending sensitivity with structure to mirror contemporary style sensibilities.

A strong focus on sustainability, the modernization of traditional crafts, and experimental design underscored a growing desire for authenticity and cultural connection. Together, these elements revealed a changing consumer mindset – one that values innovation grounded in heritage. As fashion continues to evolve, brands must balance creativity with purpose to stay relevant in an ever-adaptive landscape.

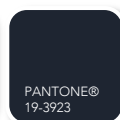
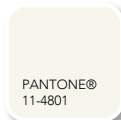
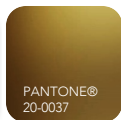
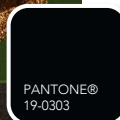
OCTOBER
2025,
MUMBAI



UBER TREND 01

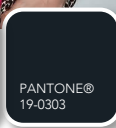
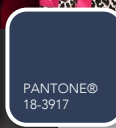
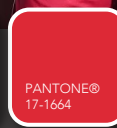
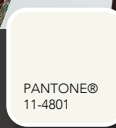
The runway showcased a *men of power* theme this season. Designers reimagined warriors, fighters, winners with a taste of heritage through the lens of power and poise – where British military precision met the opulence of Nawabi and Bengal traditions. Structured bandhgallas, regal kurtas, and draped dhotis fused colonial tailoring with artisanal craftsmanship, transforming history into modern elegance.

Designers played with ornate detailing – epaulettes, metallic trims, and hand-embroidered brocades, balancing strength with refinement. A palette of maroon, black, gold and deep uniform navy evoked royal lineage, while earthy undertones grounded the grandeur. Commanding yet cultured, The Warrior celebrated India's legacy of craftsmanship and authority, blending heritage with heroic style.





Soft Masculinity

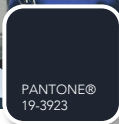
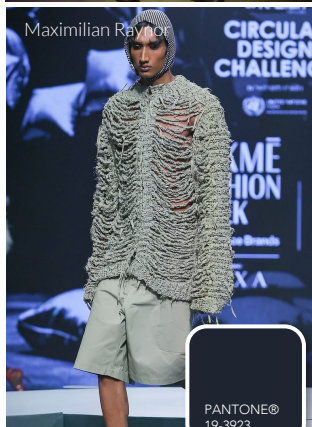


UBER TREND 04

This season the runway showcased a different facet of men, exposing their vulnerable side. The Soft Masculinity trend redefines the modern man's wardrobe through a delicate interplay of strength and sheer delicateness. On the runway, fluid silhouettes, lustrous fabrics and romantic cowl collars challenged traditional notions of power dressing for men. Satin cummerbunds, sheer georgette shirts and draped trousers replace rigid tailoring, embracing a relaxed sensuality that feels both confident and unguarded.

Designers explored both muted tones, and bright hues often paired with print-play. While handbags were common, sheen and sequin played a distinct statement role, allowing men to put emotions on display. The result – a poetic, expressive aesthetic where masculinity finds new language in softness, proving that grace and grit can coexist beautifully.

Ashish N Soni



UBER TREND 03

Menswear was reimagined through an nature's lens, celebrating microbial forms and cellular textures. Designers painted with fabric, sculpted with form and played with volume to create looks that married clothing and creation. From hand-knitted details and raw fringes to Painterly patchworks and experimental silhouettes, the trend highlighted biomimicry as its central motif.

Tailoring took on an expressive, tryptophobic turn - crafted through knits, yarns and textured weaves that felt both tactile and avant-garde. Each piece stood as a statement of creative self-assurance: bold, layered, and unapologetically personal. Rooted in craftsmanship yet charged with emotion, this trend translated the language of design into wearable art.

Rahul Dasgupta



Til by AV

Microbial

Maximilian Raynor



Nikita Mhaisalkar



Farak

CIRCULAR
DESIGN
CHALLENGE



UBER TREND 02

This season's runway redefined casualwear with a raw, creative pulse – where everyday silhouettes met the artistry of DIY craft and the memory of community. The theme resonated with nostalgia of a 'home' through patchworked patterns, tactile textiles, and handcrafted details that gave streetwear an artisanal, homegrown edge,

Designers played with asymmetry, layering, and unexpected pairings, much like homes from the 80's – mixing denim with handwoven cottons, dip-dyed knits with quilted textures, and relaxed tailoring with deconstructed forms. A palette of sand browns, deep reds, and indigo blues anchored the look, while pops of neon and thread work injected playful contrast.

Effortlessly offbeat yet deeply rooted in memory of one's childhood home, this trend blurred the lines between indie spirit and urban cool – a wearable rebellion stitched with creativity.

Colour Summary



Mr. Ajay Kumar

Snow White & Red

Fog White & Red, strike a delicate balance between calm restraint and striking vibrance. Pure whites and form the base, while flashes of bold red punctuate the palette with confidence. Together, the palette evokes the tension between silence and strength—rendered on thematic silhouettes.

PANTONE®
11-0601

PANTONE®
13-4106

PANTONE®
18-1664



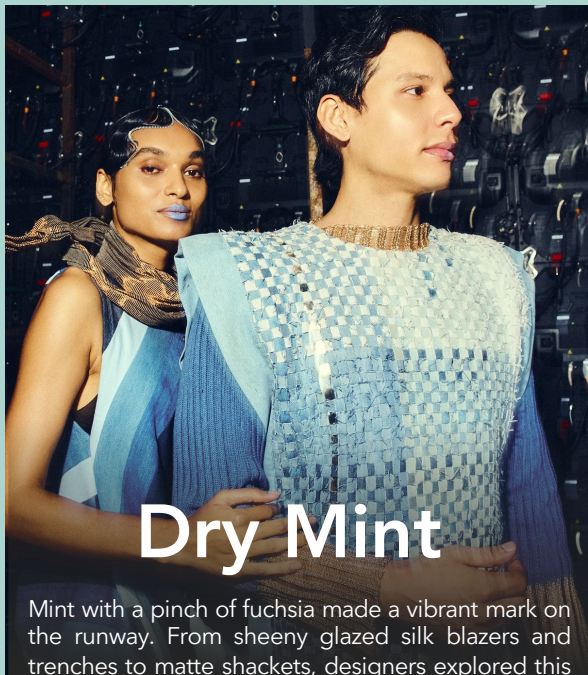
Rahul Dasgupta

Mr. Ajay Kumar

Arjan Dugal

Ashish N Soni

Anam Hussain



Dry Mint

Mint with a pinch of fuchsia made a vibrant mark on the runway. From sheeny glazed silk blazers and trenches to matte shackets, designers explored this refreshing combination across both casual and occasion wear. A calm ensemble elevated by sparks of print, fabric sheen or handcrafted textures.

PANTONE®
14-4809

PANTONE®
20-0114



Mr. Ajay Kumar

Ankush Jain

Mahima Mahajan

23°N.69°
E

Rahul Dasgupta

Navy, Storm & White

Navy & White captures timeless sophistication reimagined for the modern man. Deep nautical blues meet crisp whites, creating a dialogue between structure and serenity. Embroidered surfaces, layered prints and functional tailoring lend depth to this clean contrast, evoking confidence, calm and quiet luxury.

PANTONE®
13-4106

PANTONE®
19-4027

PANTONE®
19-3937

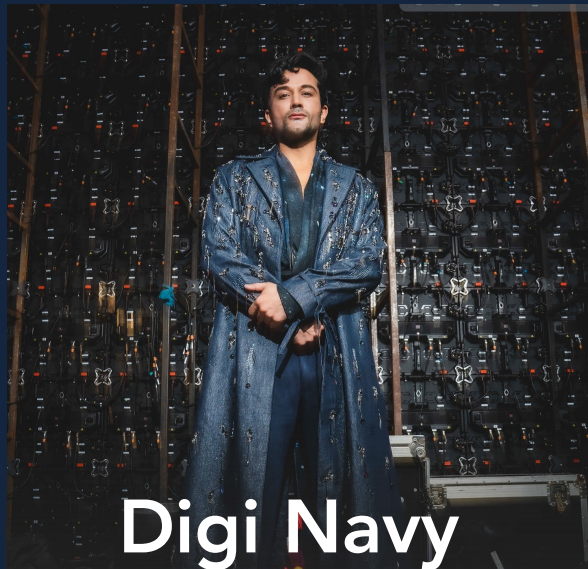


Mr. Ajay Kumar

Rahul Dasgupta

Mr. Ajay Kumar

Tasva



Nikita Mhaisalkar

Digi Navy

Echoing the mood of a digital midnight, this palette of deep teals and techno blues brings a futuristic edge to classic menswear. Sleek fabrics, metallic finishes and fluid tailoring mirror the glow of virtual realms and city lights. It's sharp, immersive and modern—where sophistication meets the shimmer of the cyber age.

PANTONE®
19-3937

PANTONE®
18-3917

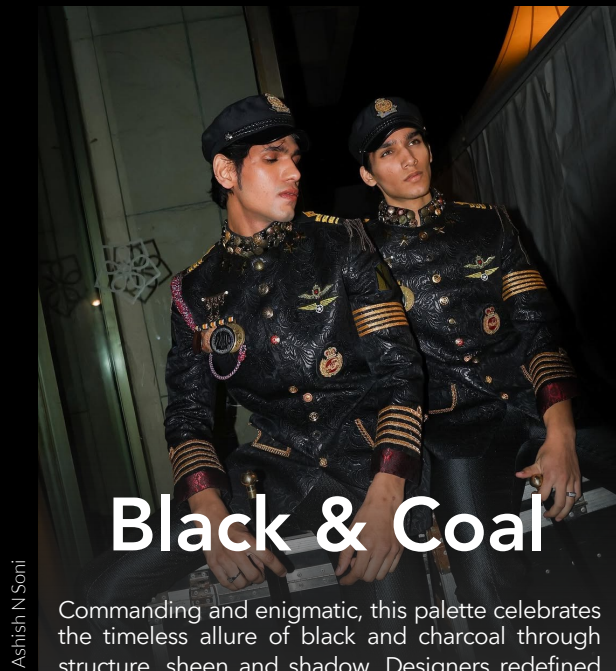


Ashish N Soni

Tasva

Nikita Mhaisalkar

23°N.69°E



Ashish N Soni

Black & Coal

Commanding and enigmatic, this palette celebrates the timeless allure of black and charcoal through structure, sheen and shadow. Designers redefined power dressing with military accents, gothic romance and tailored drama. It's a story of authority and artistry—where monochrome meets mystique, and darkness gleams with quiet sophistication.

PANTONE®
19-4010

PANTONE®
19-4305



Til by AV

Nikita Mhaisalkar

Ashish N Soni

Tasva



Naval Blue & Red

A bold interplay of intensity and restraint, this palette merges deep navy with visceral red to create a narrative of strength and seduction. Structured silhouettes and textural contrasts reflect modern masculinity—confident, composed, yet expressive. It's a palette that thrives on duality: passion meeting poise, fire grounded by depth.

Ravi Bajaj

PANTONE®
19-3923

PANTONE®
18-1664



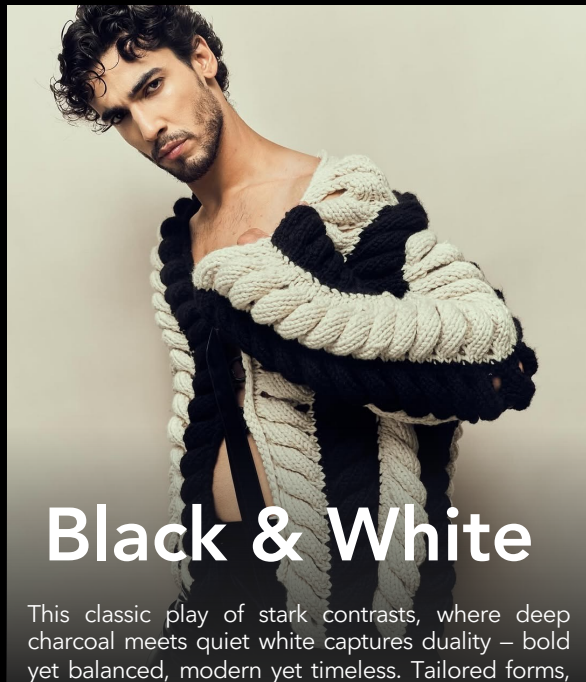
Ravi Bajaj

23°N.69°
E

Rahul Dasgupta

Arjan Dugal





Black & White

This classic play of stark contrasts, where deep charcoal meets quiet white captures duality – bold yet balanced, modern yet timeless. Tailored forms, textured layers and crisp patterns turn simplicity into statement. It's monochrome minimalism with a poetic edge.

FDCI

PANTONE®
19-4010

PANTONE®
11-0601



Rahul Dasgupta

Ashish N.Soni

Ashish N.Soni

Abraham and Thakore

Ravi Bajaj



White & Crème

Soft, serene and contemplative, this palette celebrates shades of white that exude quiet luxury. Creams, ivories and off-whites reflect purity redefined, where simplicity becomes the ultimate sophistication. Spotted in skilfully layered ensembles on the runway, the pale whites breathe freshness into classic menswear.

PANTONE®
11-0507

PANTONE®
11-4300



Tasva

Abraham and Thakore

Arjan Dugal

Ravi Bajaj

Anam Hussain



Foliage & Fawn

This natural palette captures the harmony between earthy warmth and airy coolness. Muted blues and golden tans blend to evoke desert horizons meeting open skies. Designers translated this palette into breezy linens, textured silks and layered separates, grounding serenity with sunlit charm. It's a colour story of calm confidence and effortless ease.

PANTONE®
18-0622

PANTONE®
16-1124

PANTONE®
12-0910



Tasva

Til by AV

Til by AV

Naushad Ali



Ravi Bajaj

Dark Forest

"Dark Forest" a deep, nature-rooted hue, grounds men's fashion in earthy sophistication. Rendered on parachute nylons, silks, velvets and matte layers, the palette mirrored the depth of woodland shadows and the quiet strength of nature, bringing a sense of mystery and calm resilience while blending raw masculinity with organic grace.

PANTONE®
19-4013

PANTONE®
19-5918



Pearl

Abraham and Thakore

Mahima Mahajan

Tasva

Disclaimer and Confidentiality:

Disclaimer: Images used herein belong to us or our licensor(s) The Voice of Fashion, as identified herein. Images used are for the sole purpose of representation of our review and analysis and meant for reference purpose only; not to be duplicated or published or used further in any manner. Images displayed on the pages from public sites are not claimed to be created by or owned by the author. All intellectual property in the content including but not limited to any text, photographs, images, designs, artwork and logos belongs to and is and shall be owned by us or our licensors or other copyright holders as applicable and cannot be reproduced, adapted, modified, displayed or distributed, unless expressly authorized by the owner thereof. The author is not responsible for the further distribution of this content beyond the intended parties. The content provided is a guide only and not intended to be prescriptive.

Confidentiality:

The content is confidential and is meant only for internal purposes only and not to be shared with or transferred to any third party or displayed publicly. The report is our property, and the purchase thereof does not give you further rights, title or interest in or to the report or to the content thereof except to the extent expressly authorized herein and you may not otherwise reproduce, adapt, modify, display, perform or distribute the report or any part of it.

PANTONE® Disclaimer: The PANTONE® Reference names and/or numbers are from the PANTONE FASHION, HOME + INTERIORS color system (a component of the PANTONE Textile Color System®). The colors shown here are on-screen simulations and may not match the PANTONE Color Standards. For accurate PANTONE Color Standards, refer to current editions of PANTONE FASHION, HOME + INTERIORS Swatch Cards. PANTONE is a trademark or registered trademark of Pantone LLC in the United States and/or other countries. Portions © Pantone LLC, 2020. Pantone's trademarks and copyrights used with the permission of Pantone LLC under License Agreement with ICH Creative Consulting LLP.

For any enquiries, assistance, concerns or clarifications please write to ichnext@ichcreative.com